

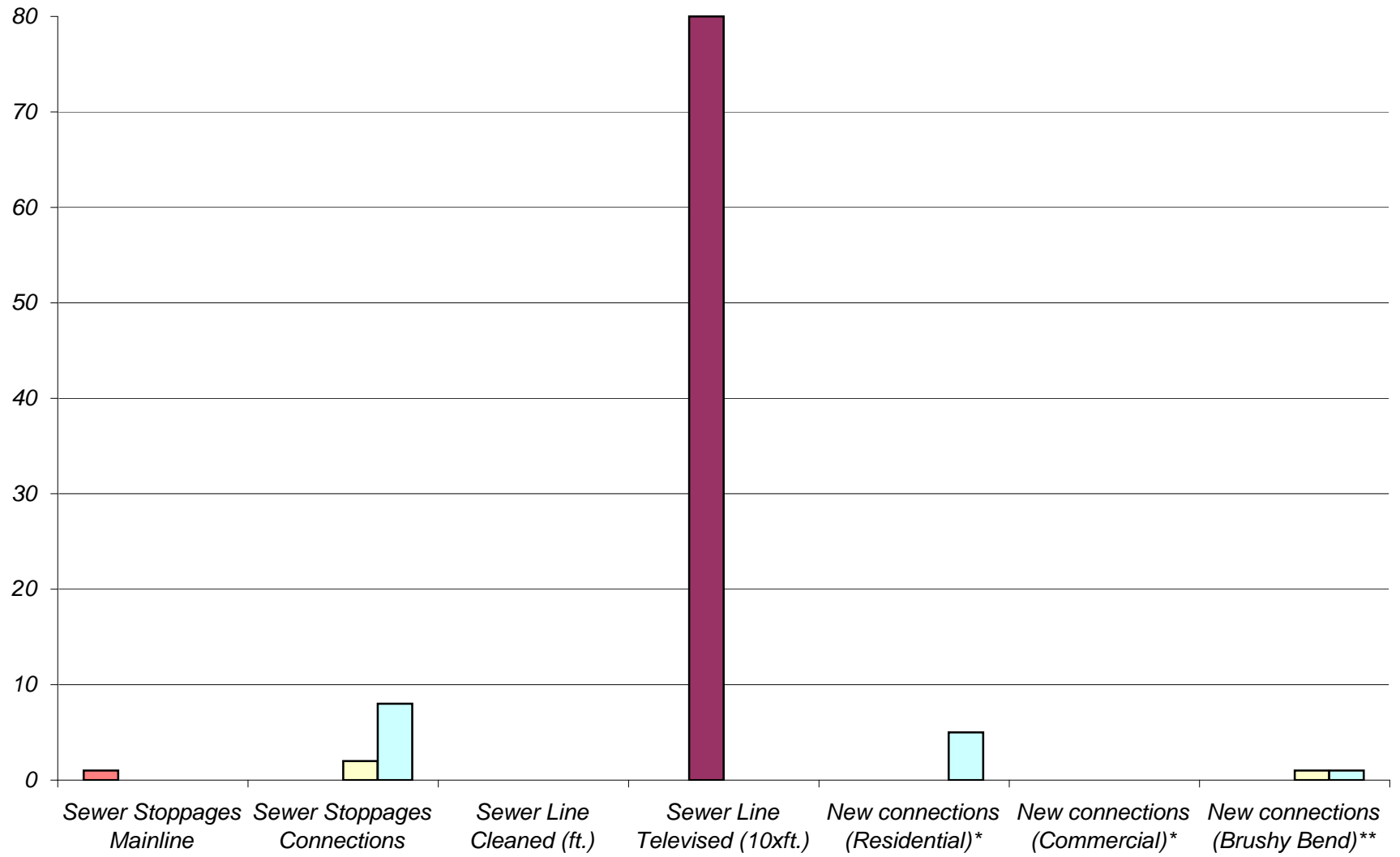


PUBLIC WORKS DEPARTMENT

2008 METRICS

2008
Monthly Metrics for Wastewater

January February March April



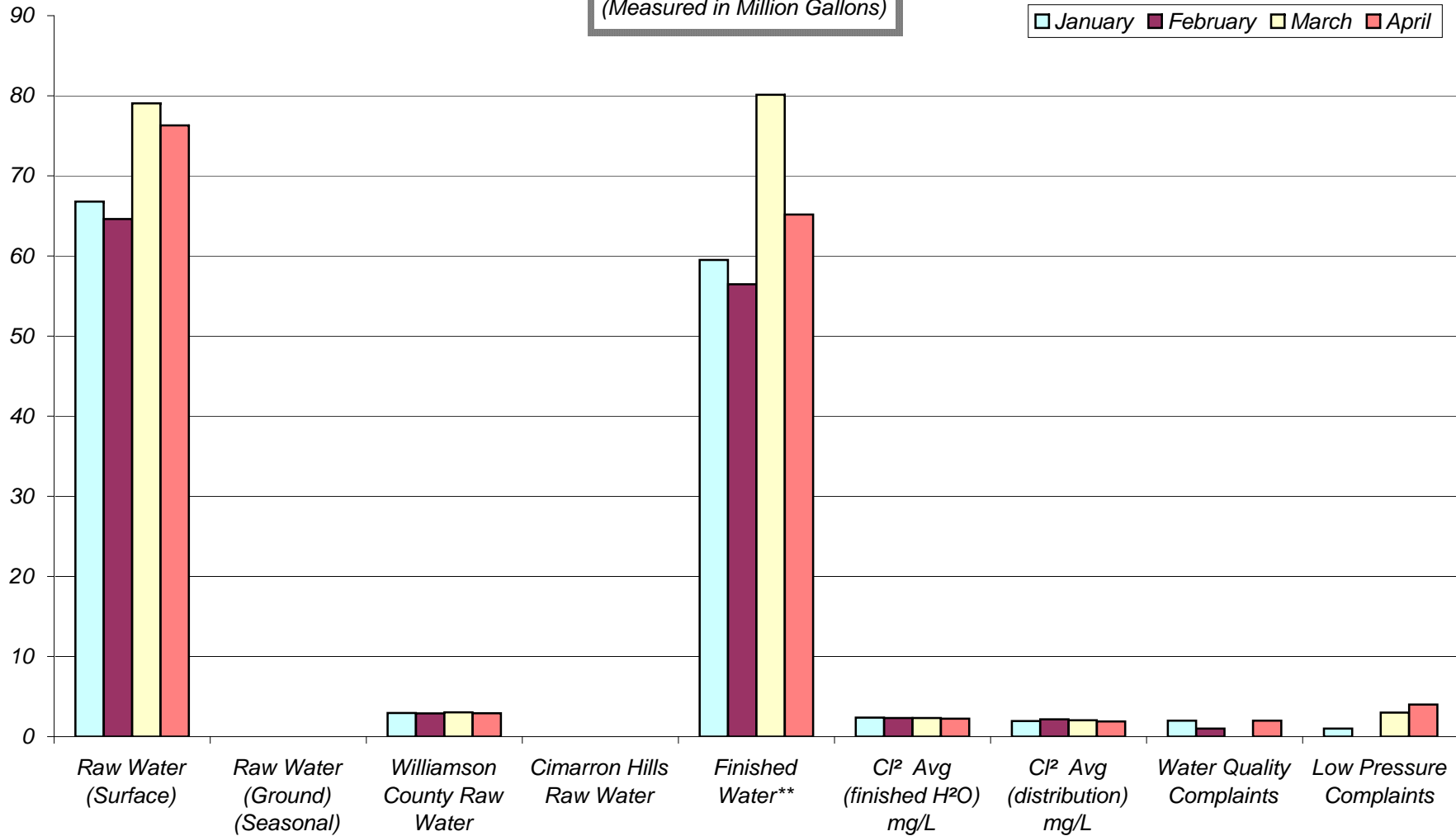
*Budget based on 15 per month between residential and commercial.

**Subdivision is 95% built out

	January	February	March	April	May	June	July	August	September	October	November	December
Raw Water (Surface)	66.79	64.62	79.06	76.3		(Seasonal)						
Raw Water (Ground) (Seasonal)	0	0	0	0		(Seasonal)						
Williamson County Raw Water	2.95	2.9	3.03	2.92								
Cimarron Hills Raw Water	0	0	0	0								
Finished Water**	59.51	56.47	80.13	65.17		(See drought stages below)						
Cl ² Avg (finished H ² O) mg/L	2.37	2.32	2.33	2.24		(Target is 2.3. Minimum is 0.5 mg/l max 4.0 annual average)						
Cl ² Avg (distribution) mg/L	1.94	2.16	2.05	1.89		(Target is 2.0. Minimum is 0.5 mg/l)						
Water Quality Complaints	2	1	0	2								
Low Pressure Complaints	1	0	3	4								
Water Billed	52.81	52.35	59.25			(Seasonal and weather related)						
Water Loss (%)	8.37	4.11	26.06			(Target is 10% or less)						
Fire Hydrant Flushing	1.72	1.81	2.19	1.9		(TCEQ requires monthly flushing of deadend mains)						
Permits	5	6	9	6		(Budget based on 15 per month)						
Meters Read (100xConnections)	49.67	49.73	49.77									
Meters Reread	78	71	82			(Goal is -0-. Target is less than 50)						
Meters Misread	27	25	42			(Goal is -0-. Target is 20-30)						
Meters Replaced	1	16	4	4								
Meter Box Replaced	46	35	0	6		(10-20 per month)						
Meter Installs (new connection)	7	9	1	6		(Budget based on 15 per month)						
Certificate of Occupancy	12	7	12	8		(Close to parallel with meter installs)						
Leaks (mains)	1	0	0	0								
Leaks (service lines)	7	7	2	2								
Leaks (irrigation)	11	0	0	3								
Valve Maintenance	0	0	0	0								
*in million gallons (MGs)												
Drought stages: Stage I - Voluntary, May 1st - September 30th												
Stage II - Mandatory when demand hits 5.6 MGD for 3 consecutive days												
Stage III - Mandatory when demand hits 5.91 MGD for 3 consecutive days												
NOTE: Water loss, water billed and meter read calculations for April and all future months will be presented in June due to the billing cycle.												
LUEs (Water)												
LUEs (Wastewater)												
LUEs (Brushy Bend)												

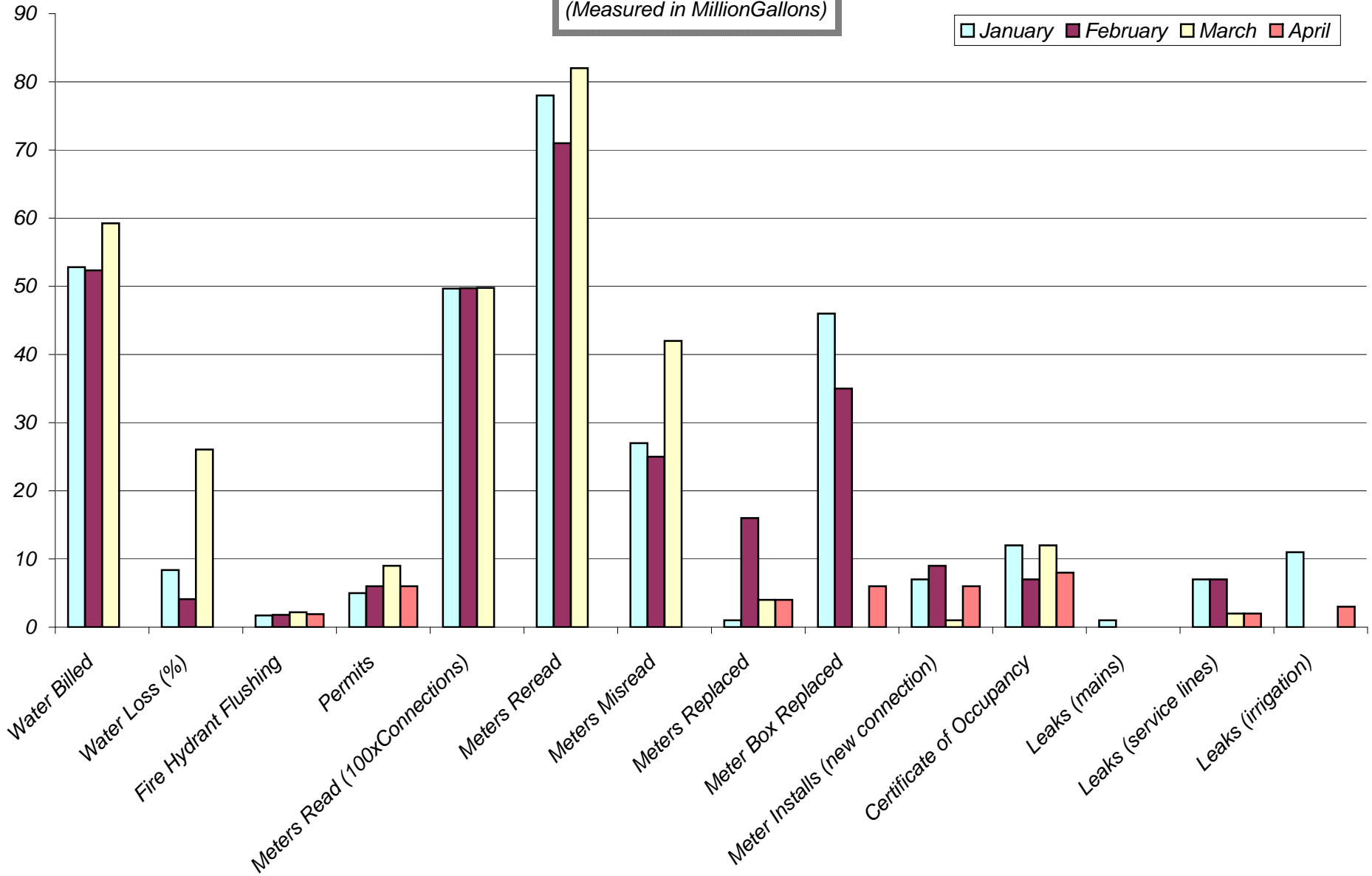
2008
 Monthly Metrics for Water
 (Measured in Million Gallons)

■ January
 ■ February
 ■ March
 ■ April



2008
 Monthly Metrics for Water
 (Measured in MillionGallons)

January February March April



NOTE: Water Billed; Water Loss; and Meter Read data not available at the time of this report. These statistics will run 2 months in arrears due to district billing cycles.