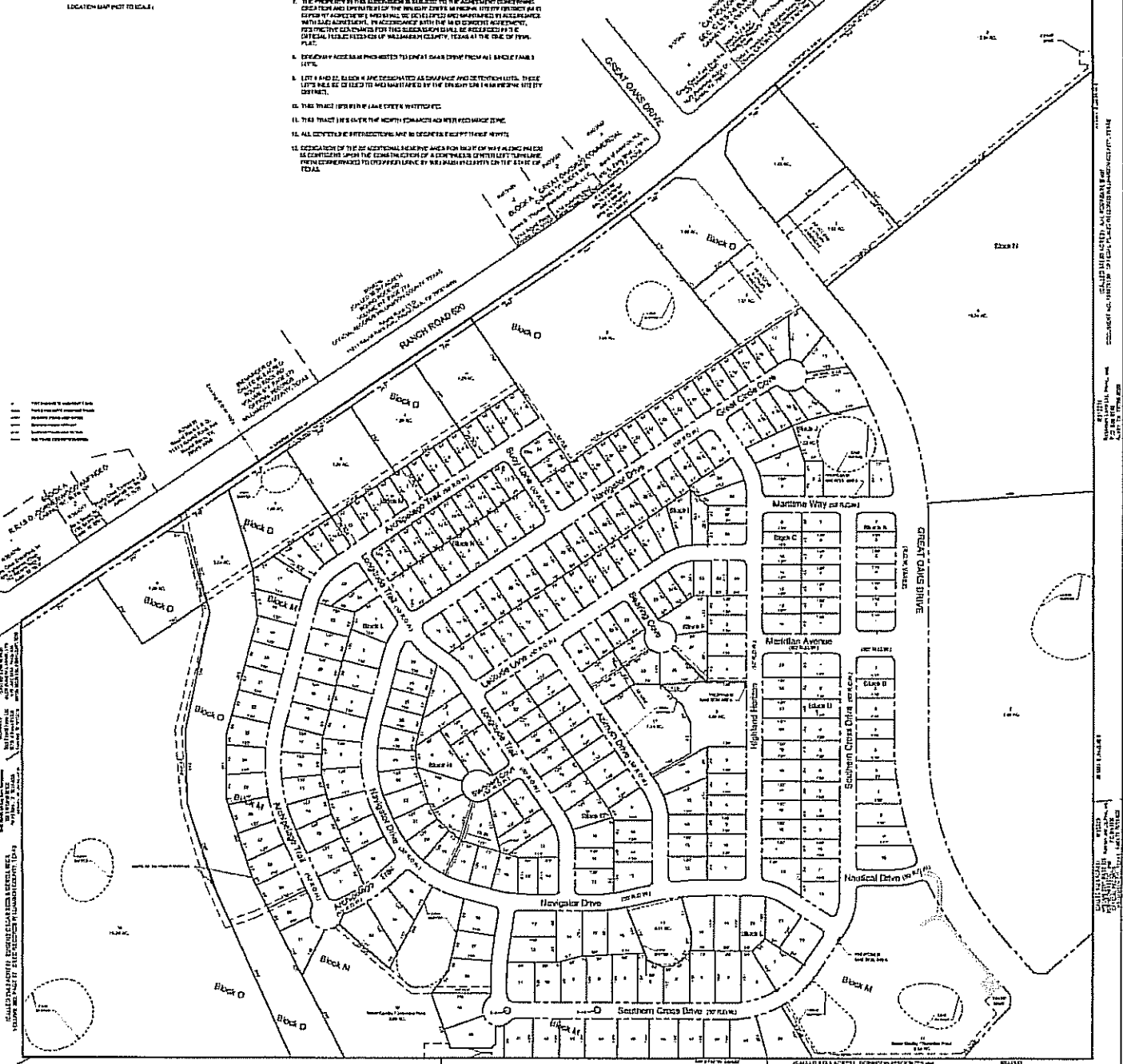
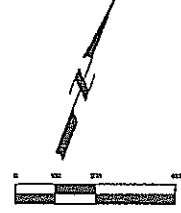
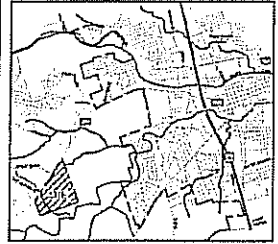




# PRELIMINARY PLAT OF HIGHLAND HORIZON

- CLUSTERING NOTES:**
1. THE TRACTS SHOWN HEREIN ARE AS SHOWN, FROM BUILDING LINES AND SETBACKS ONLY. SETBACKS SHOWN FOR EXISTING BUILDINGS ARE TO BE MAINTAINED. SETBACKS SHOWN FOR PROPOSED BUILDINGS ARE TO BE MAINTAINED. SETBACKS SHOWN FOR PROPOSED BUILDINGS ARE TO BE MAINTAINED.
  2. UTILITIES FOR STRUCTURES ARE PERMITTED TO CROSS EASEMENTS, AND PERIODS OF EASEMENTS ARE PERMITTED TO CROSS EASEMENTS AS SHOWN ON THIS PLAT.
  3. IN ACCORDANCE WITH THE EASEMENTS SHOWN HEREIN, A TEN (10) FOOT WIDE PUBLIC UTILITY EASEMENT ADJACENT TO ALL SIDES OF TRACTS OF ANY SIZE SHALL BE MAINTAINED AND SHALL BE SUBJECT TO THE PUBLIC UTILITY EASEMENT RIGHTS OF ANY PUBLIC UTILITY AND SHALL BE SUBJECT TO THE PUBLIC UTILITY EASEMENT RIGHTS OF ANY PUBLIC UTILITY.
  4. A PORTION OF THIS TRACT IS WITHIN THE DESIGNATED FLOOD HAZARD ZONE A ALL SHOWN ON FEDERAL FLOOD INSURANCE ADMINISTRATION FLOOD INSURANCE MAP DATED JANUARY 1, 1987.
  5. TRACTS IN THIS SUBDIVISION SHALL BE CONVEYED TO SUCCESSORS BY THE DEED OR OTHER INSTRUMENTS WHICH SHALL BE MAINTAINED AS SHOWN ON THIS PLAT.
  6. THIS SUBDIVISION IS LOCATED WITHIN THE JURISDICTION OF THE BRADY COUNTY MUNICIPAL UTILITY DISTRICT. ALL UTILITIES SHALL BE PROVIDED BY THE BRADY COUNTY MUNICIPAL UTILITY DISTRICT. ALL UTILITIES SHALL BE PROVIDED BY THE BRADY COUNTY MUNICIPAL UTILITY DISTRICT. ALL UTILITIES SHALL BE PROVIDED BY THE BRADY COUNTY MUNICIPAL UTILITY DISTRICT.
  7. THE PROPERTY IN THIS ALLOCATION IS SUBJECT TO AN EASEMENT FOR THE CONVEYANCE AND OPERATION OF THE BRADY COUNTY MUNICIPAL UTILITY DISTRICT AS SHOWN ON THIS PLAT. THE PROPERTY IN THIS ALLOCATION IS SUBJECT TO AN EASEMENT FOR THE CONVEYANCE AND OPERATION OF THE BRADY COUNTY MUNICIPAL UTILITY DISTRICT AS SHOWN ON THIS PLAT.
  8. EASEMENTS ARE SHOWN HEREIN TO BE MAINTAINED AS SHOWN ON THIS PLAT.
  9. LOTS 1 AND 22, BLOCK 4 ARE DESIGNATED AS CHURCH AND RECREATION LOTS. THESE LOTS SHALL BE USED TO MAINTAIN THE CHURCH AND RECREATION LOTS DISTRICT.
  10. THIS TRACT IS WITHIN A FLOOD HAZARD ZONE.
  11. THIS TRACT IS WITHIN A FLOOD HAZARD ZONE.
  12. ALL UTILITIES ARE PERMITTED TO CROSS EASEMENTS AS SHOWN ON THIS PLAT.
  13. CONVEYANCE OF THE TRACTS SHOWN HEREIN SHALL BE SUBJECT TO THE EASEMENTS SHOWN ON THIS PLAT.



CALL TO YOUR AGENT FOR MORE INFORMATION. ALL INFORMATION IS SUBJECT TO CHANGE WITHOUT NOTICE. THIS PLAT IS SUBJECT TO THE EASEMENTS SHOWN HEREON. THE PROPERTY IN THIS ALLOCATION IS SUBJECT TO AN EASEMENT FOR THE CONVEYANCE AND OPERATION OF THE BRADY COUNTY MUNICIPAL UTILITY DISTRICT AS SHOWN ON THIS PLAT.