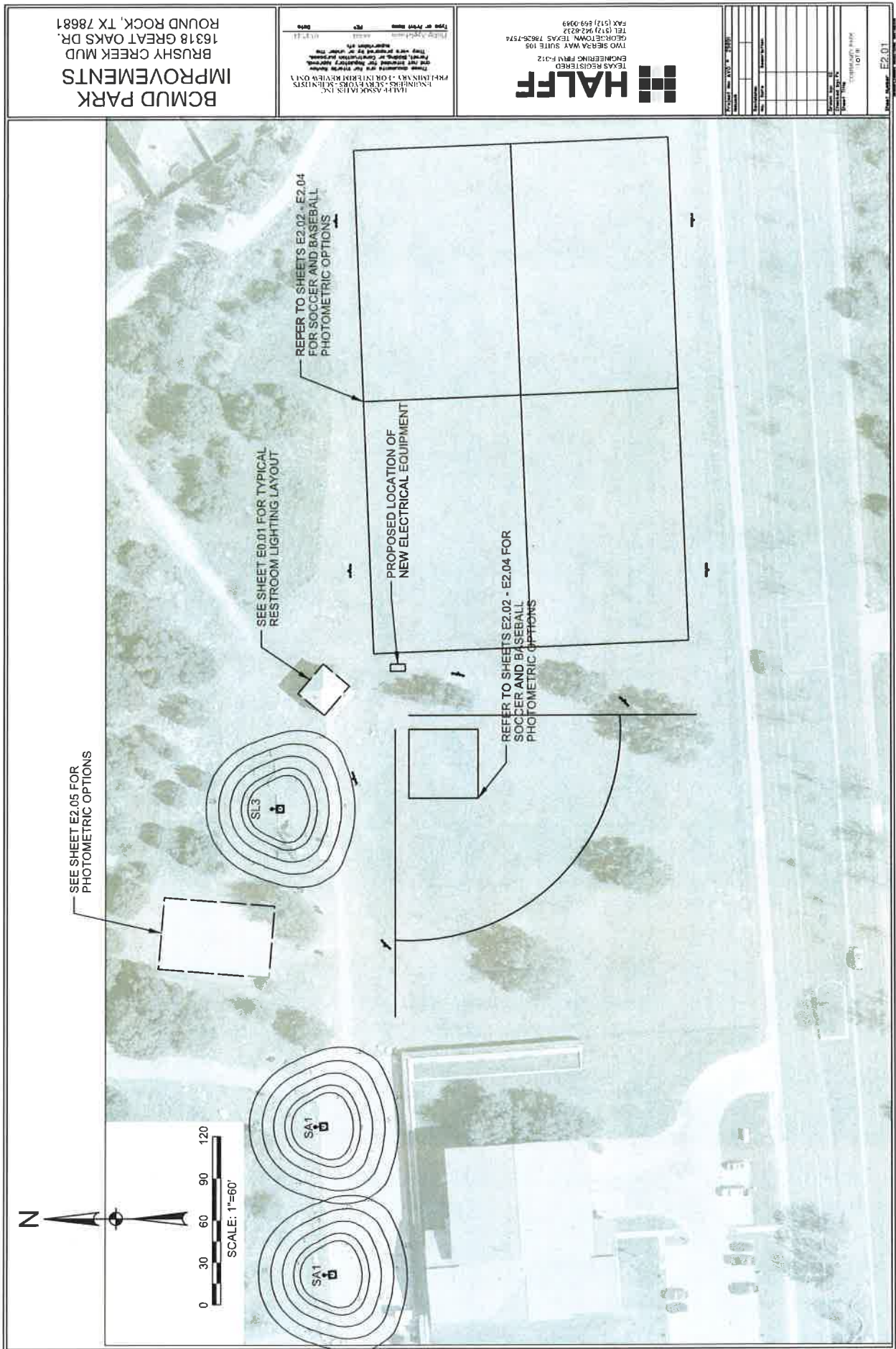


Community Park- Parking Lot and Playscape Lighting



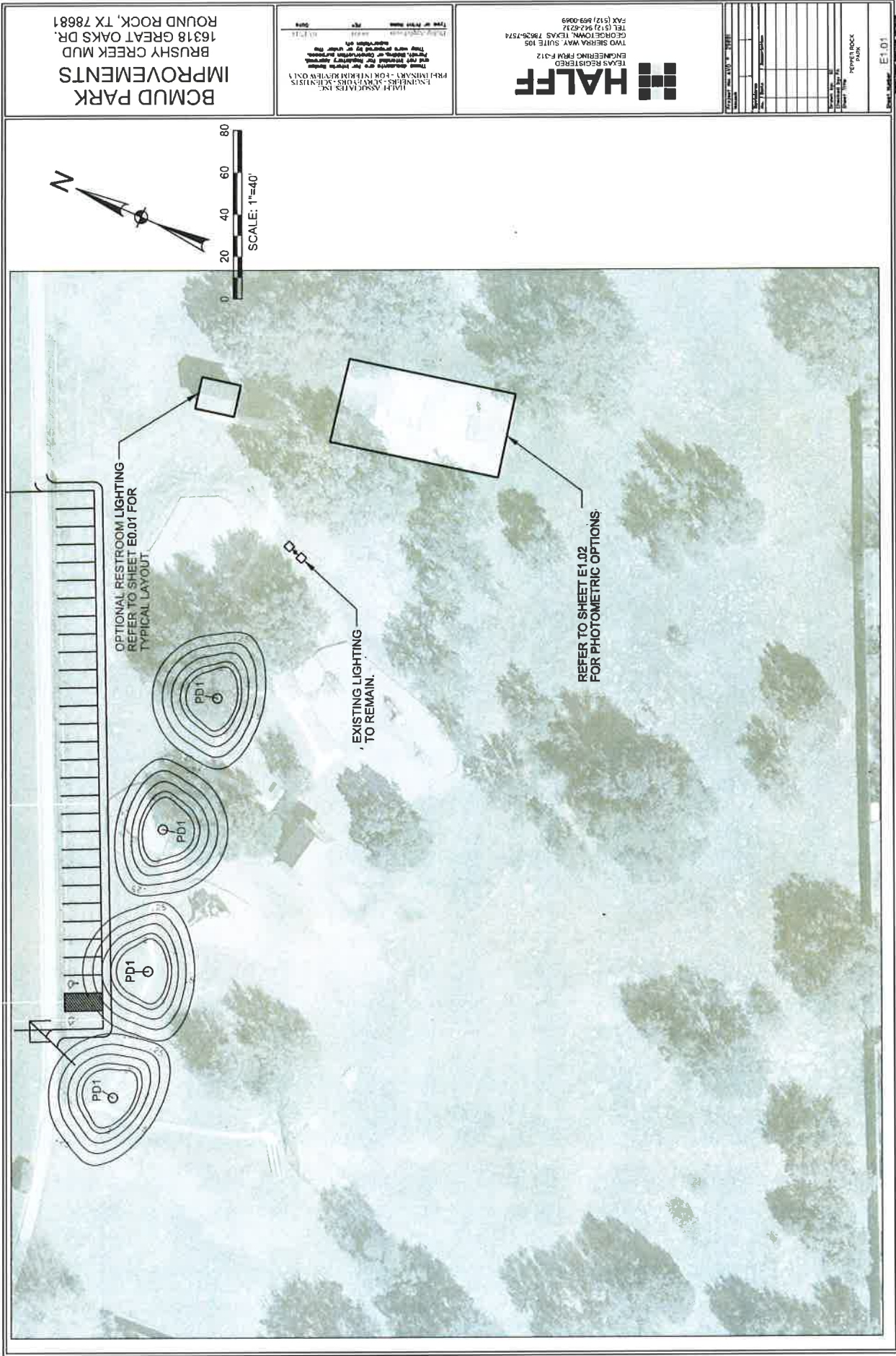
BCMUD PARK IMPROVEMENTS
BRUSHY CREEK MUD
16318 GREAT OAKS DR.
ROUND ROCK, TX 78681

HALF ASSOCIATES, INC.
ENGINEERING ARCHITECTURE INTERIOR DESIGN
EXHIBIT A - FOR INTERIM REVIEW ONLY

HALFF
TEXAS REGISTERED ENGINEERING FIRM F-12
TWO SHERA WAY SUITE 105
GROESBECK, TEXAS 78626-1574
TEL (512) 942-4232
FAX (512) 599-0949

Project No.	E2.01
Project Name	Community Park
Sheet No.	1 of 1
Revision No.	
Revision Description	
Scale	1"=60'

Pepper Rock Park Trail Lighting

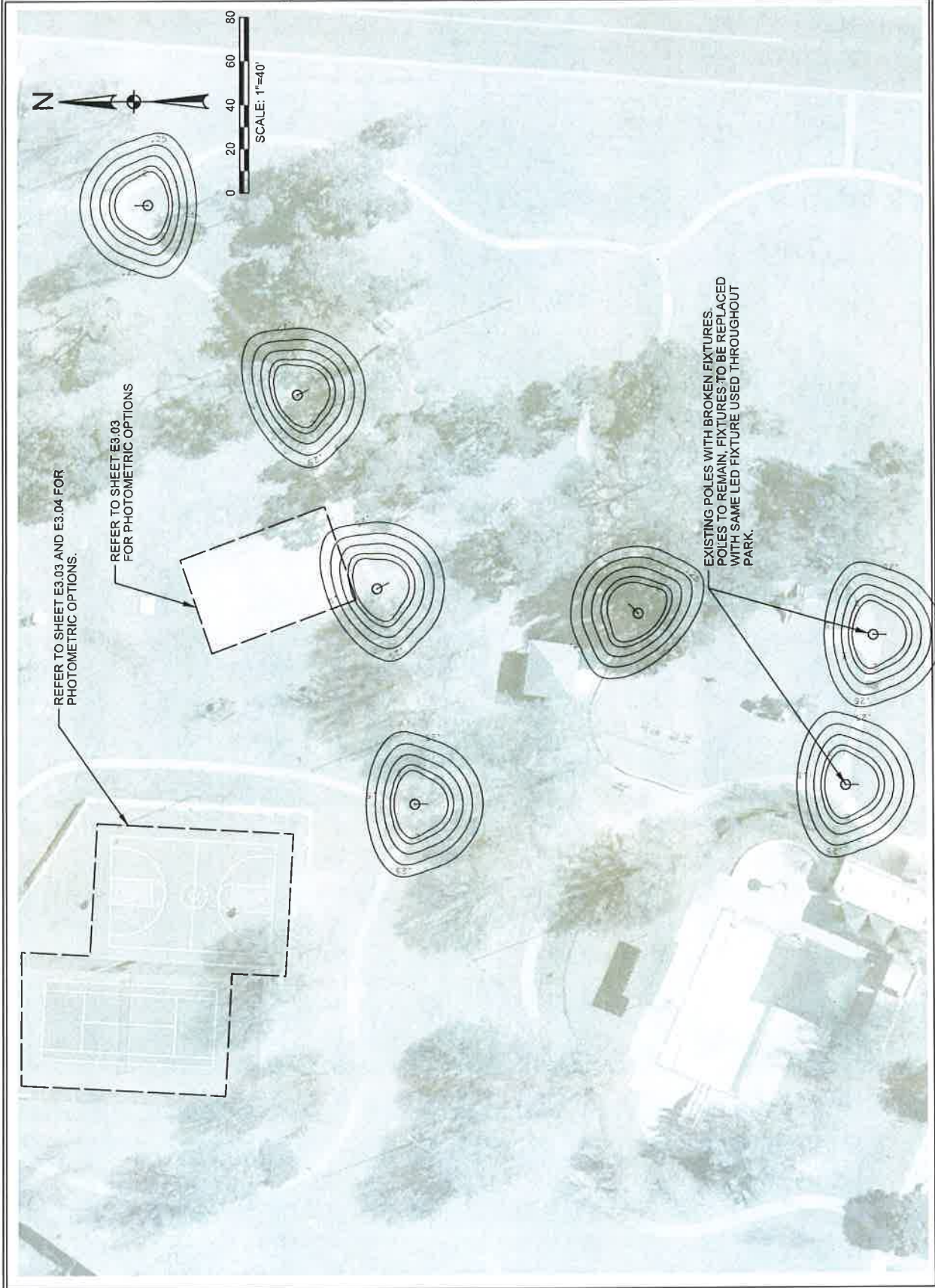


BCMUD PARK IMPROVEMENTS
 BRUSHY CREEK MUD
 16318 GREAT OAKS DR.
 ROUND ROCK, TX 78681

HALF ASSOCIATES, P.C.
 ENGINEERING ARCHITECTS INTERIORS
 10000 W. BRUSHY CREEK BLVD. SUITE 100
 ROUND ROCK, TX 78681
 TEL: (512) 992-2111
 FAX: (512) 992-2111

HALFF
 ENGINEERING PLANNING
 TWO SHERMAN WAY SUITE 105
 GEORGETOWN, TEXAS 78626
 TEL: (512) 992-2111
 FAX: (512) 992-2111

Project No.	12101
Sheet No.	E3.01
Scale	1"=40'
Date	08/11/11
Drawn By	W. H. H.
Checked By	W. H. H.
Approved By	W. H. H.
Client	BCMUD
Location	Brushy Creek MUD
Project Name	BCMUD Park Improvements
Sheet Title	Lighting Plan
Scale	1"=40'
Date	08/11/11
Drawn By	W. H. H.
Checked By	W. H. H.
Approved By	W. H. H.

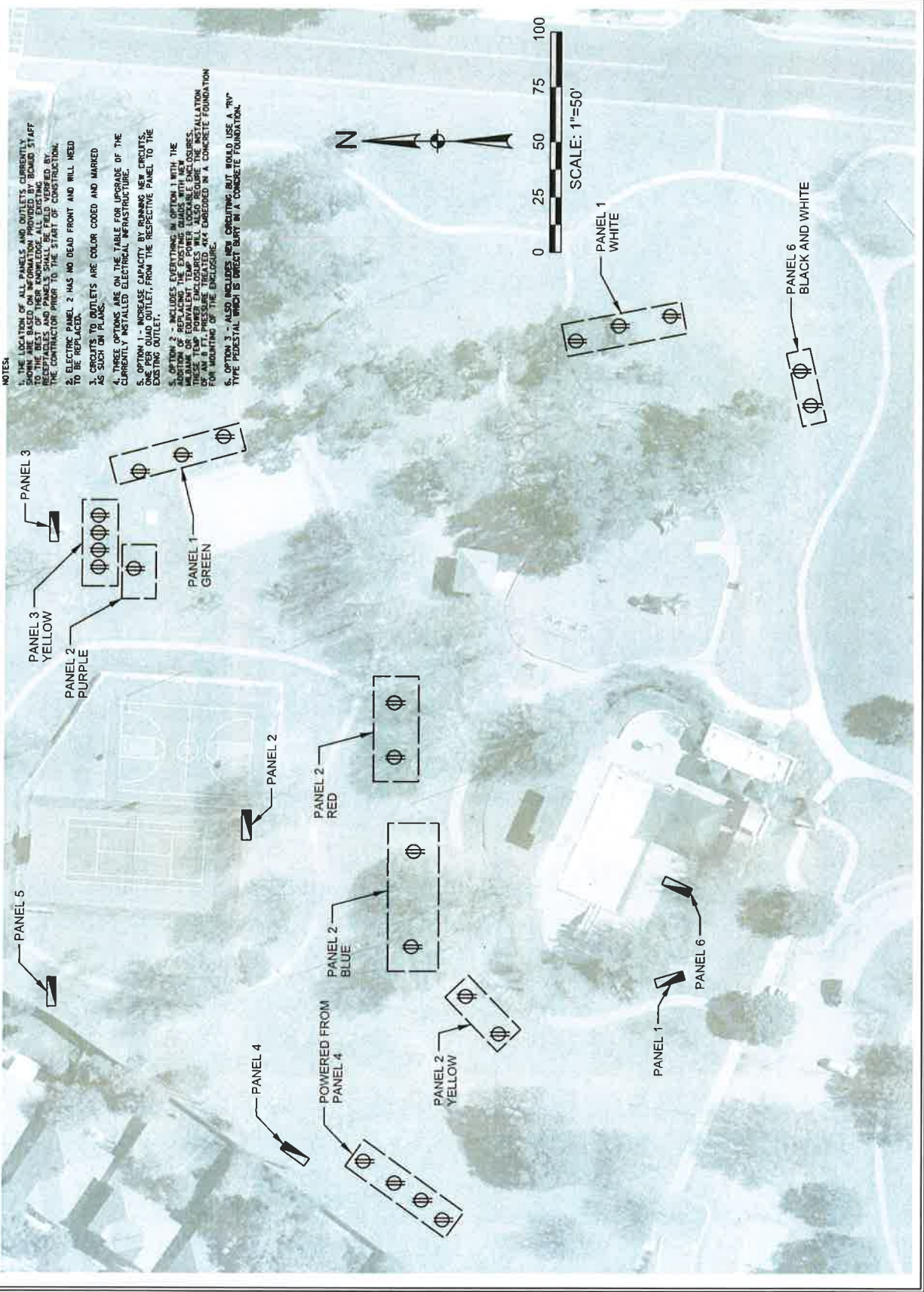


REFER TO SHEET E3.03 AND E3.04 FOR PHOTOMETRIC OPTIONS.

REFER TO SHEET E3.03 FOR PHOTOMETRIC OPTIONS

EXISTING POLES WITH BROKEN FIXTURES. POLES TO REMAIN, FIXTURES TO BE REPLACED WITH SAME LED FIXTURE USED THROUGHOUT PARK.

Cat Hollow Park- Electric Outlet Locations



NOTES

1. THE LOCATION OF ALL PANELS AND OUTLETS CURRENTLY ON THE SITE IS BASED ON INFORMATION PROVIDED BY BOUND STAFF RECEIPTABLES AND PANELS SHALL BE FIELD VERIFIED BY THE CONTRACTOR PRIOR TO THE START OF CONSTRUCTION.
2. ELECTRIC PANEL 2 HAS NO DEAD FRONT AND WILL NEED TO BE REPLACED.
3. CIRCUITS TO OUTLETS ARE COLOR CODED AND MARKED AS SUCH ON PLANS.
4. THREE OPTIONS ARE ON THE TABLE FOR UPGRADE OF THE CURRENTLY INSTALLED ELECTRICAL INFRASTRUCTURE.
5. OPTION 1 - INCREASE CAPACITY BY RUNNING NEW CIRCUITS, ADD OUTLET, FROM THE RESPECTIVE PANEL TO THE EXISTING OUTLET.
6. OPTION 2 - INCLUDES EXISTING IN OPTION 1 WITH THE ADDITION OF REPLACING THE EXISTING GUARDS WITH NEW MINIMUM OR EQUIVALENT TEMP POWER LOCKABLE ENCLOSURES.
7. OPTION 3 - INCLUDES EXISTING IN OPTION 1 WITH THE ADDITION OF AN 8 FT. PRESSURE TREATED 4X4 CAGED IN A CONCRETE FOUNDATION FOR MOUNTING OF THE ENCLOSURE.
8. OPTION 3 - ALSO INCLUDES NEW CIRCUITING BUT WOULD USE A "TV" TYPE PEDIESTAL WHICH IS DIRECT BURY IN A CONCRETE FOUNDATION.

BCMUD PARK IMPROVEMENTS
BRUSHY CREEK MUD
16318 GREAT OAKS DR.
ROUND ROCK, TX 78681

DATE: 06/17/24
PROJECT: BCMUD PARK IMPROVEMENTS
DRAWN BY: [Name]
CHECKED BY: [Name]
APPROVED BY: [Name]



HALFF ENGINEERING FIRM P.C.
120 SIERRA WAY SUITE 105
GEORGETOWN, TEXAS 76208-2774
TEL: (512) 924-2472
FAX: (512) 593-0943

PROJECT NO.	24001
DATE	06/17/24
SCALE	AS SHOWN
DRAWN BY	[Name]
CHECKED BY	[Name]
APPROVED BY	[Name]
DATE	06/17/24
PROJECT	BCMUD PARK IMPROVEMENTS
SHEET NO.	E3.02